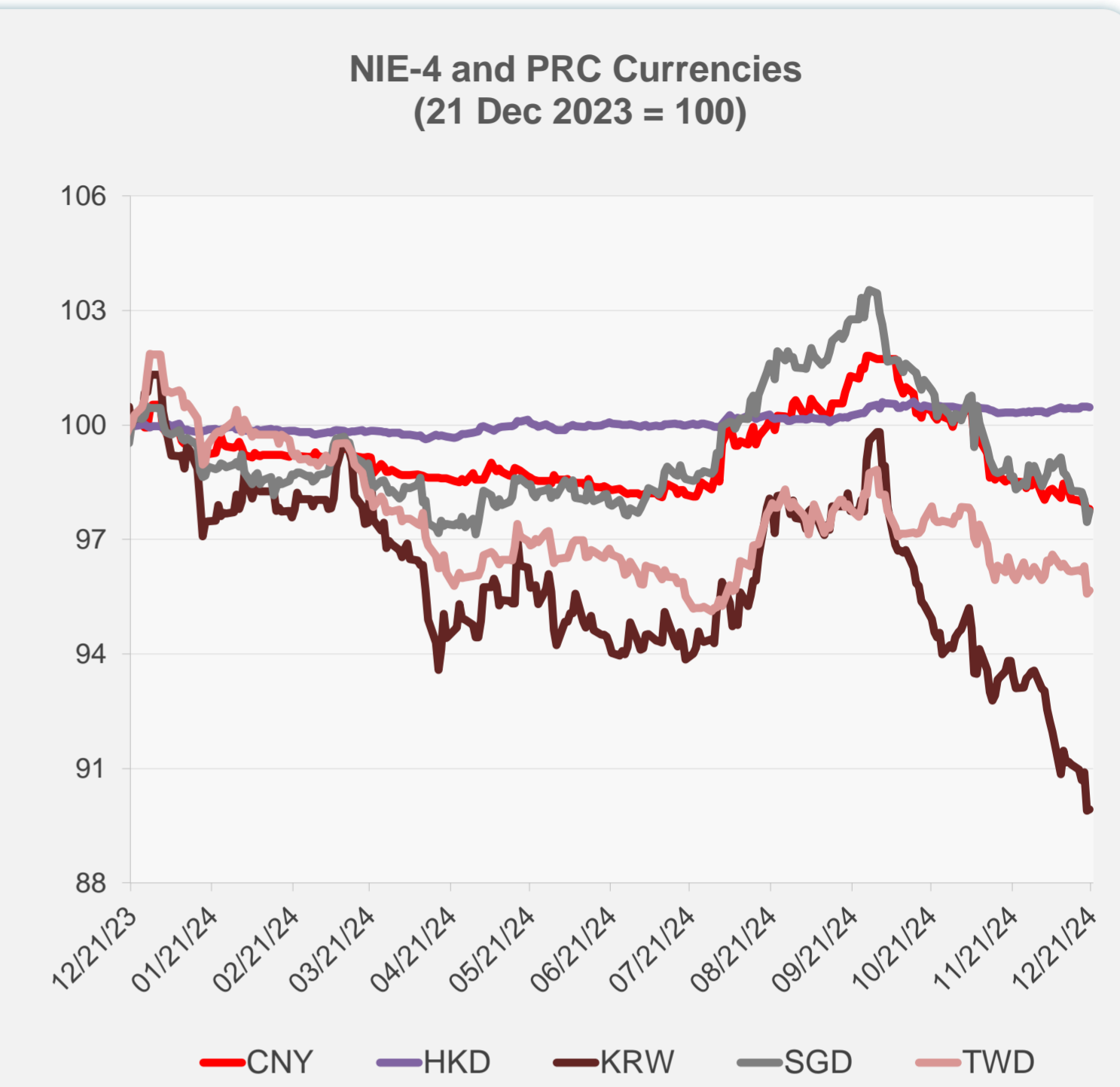
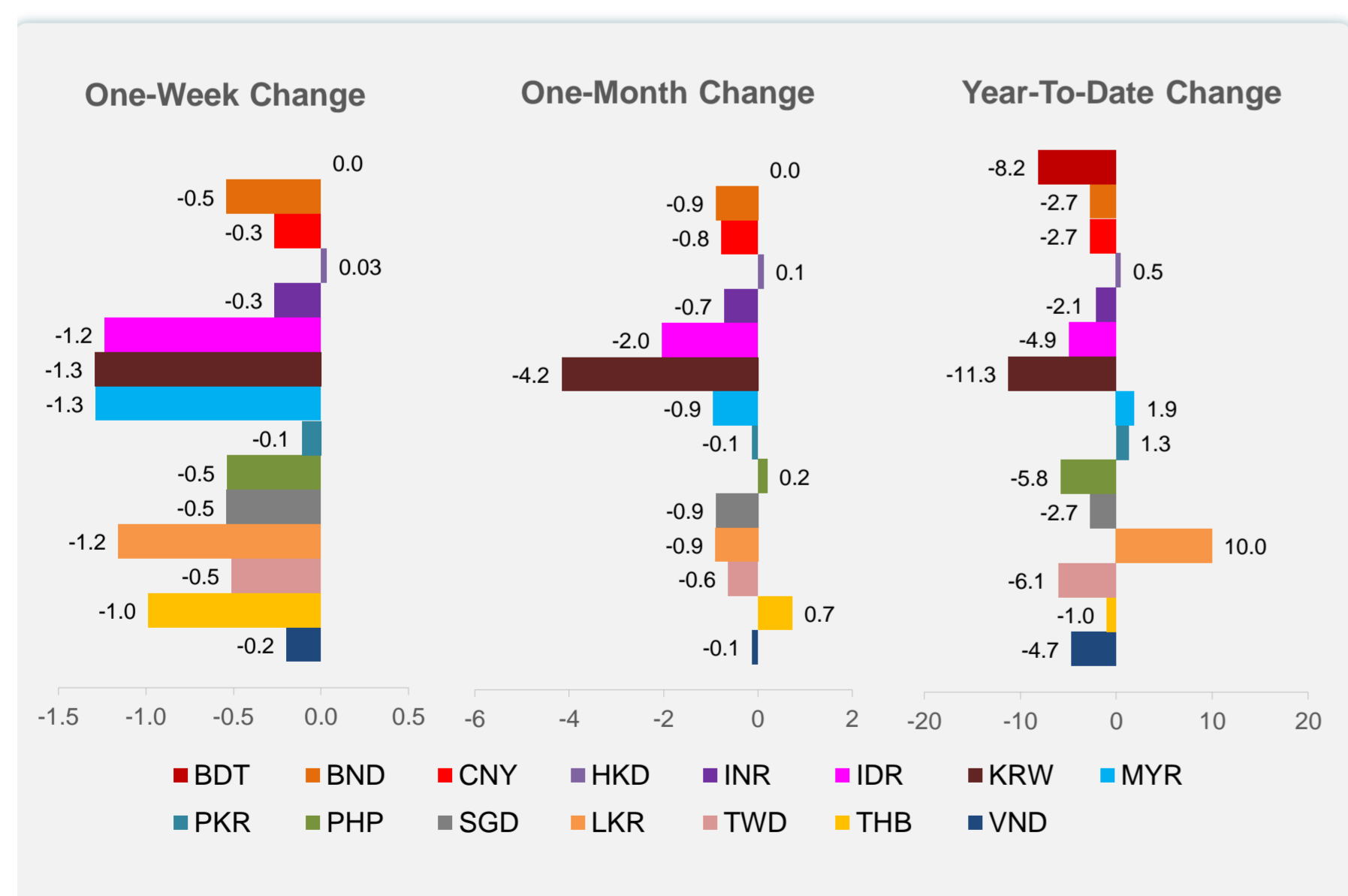
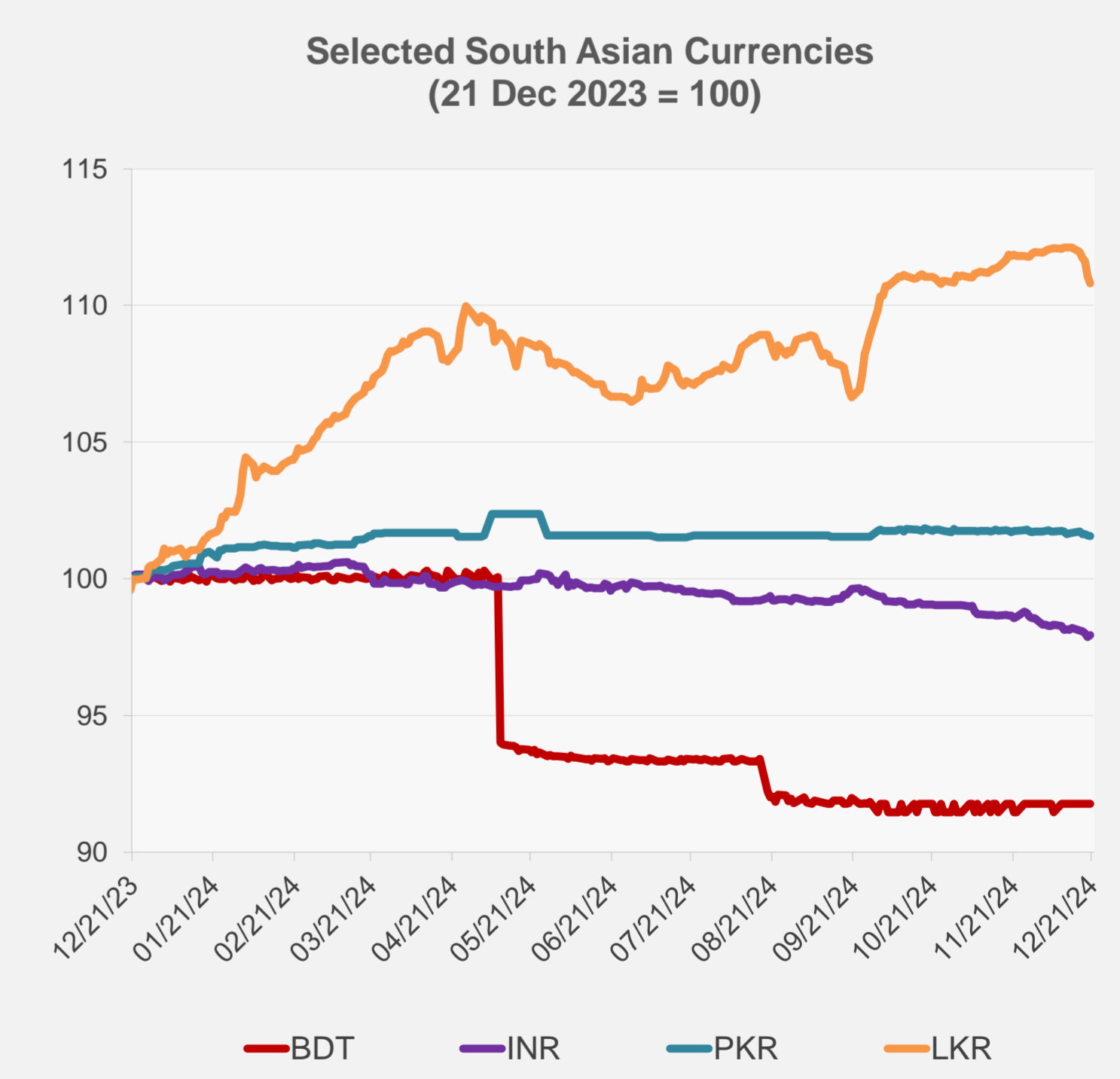
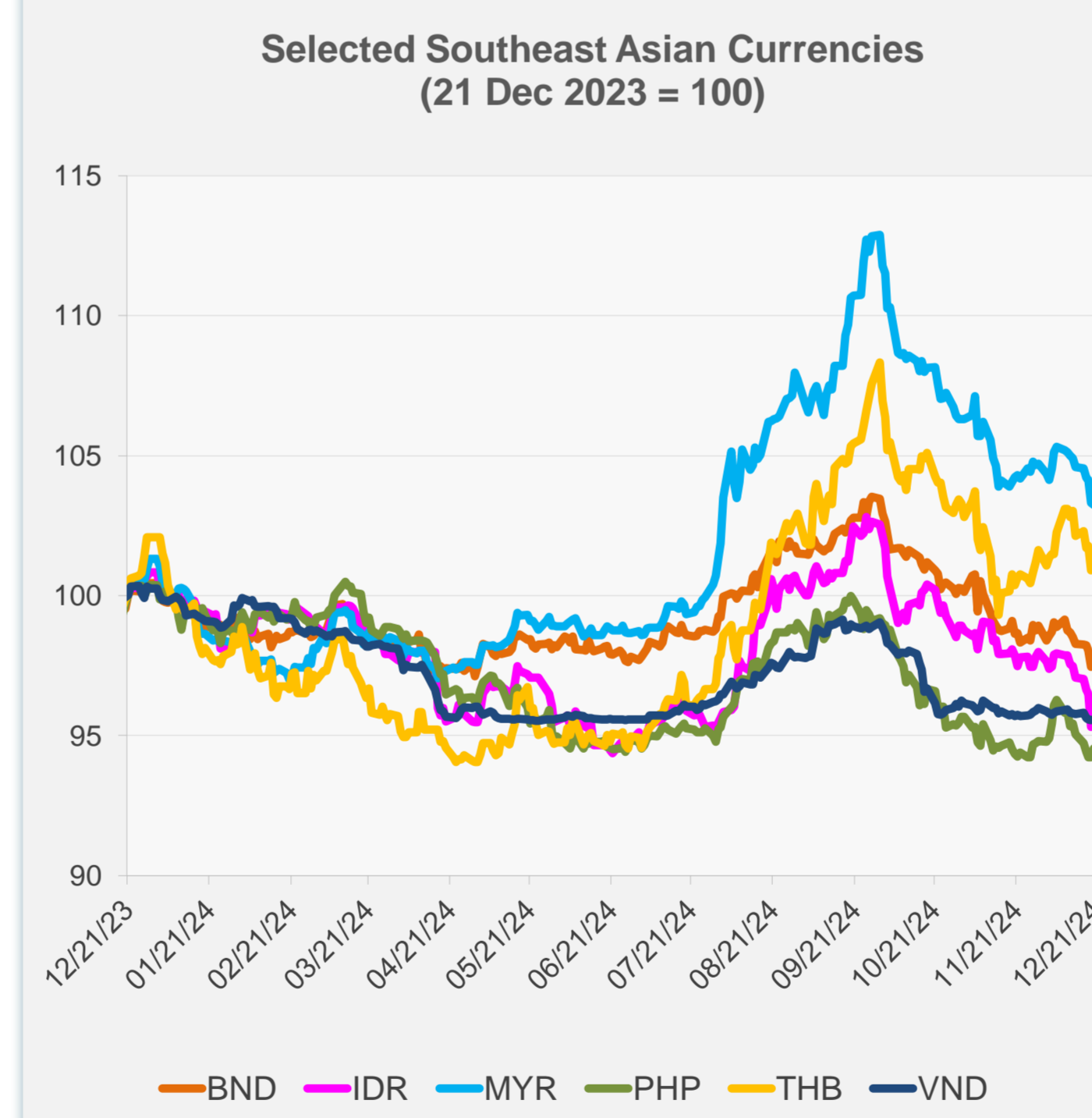


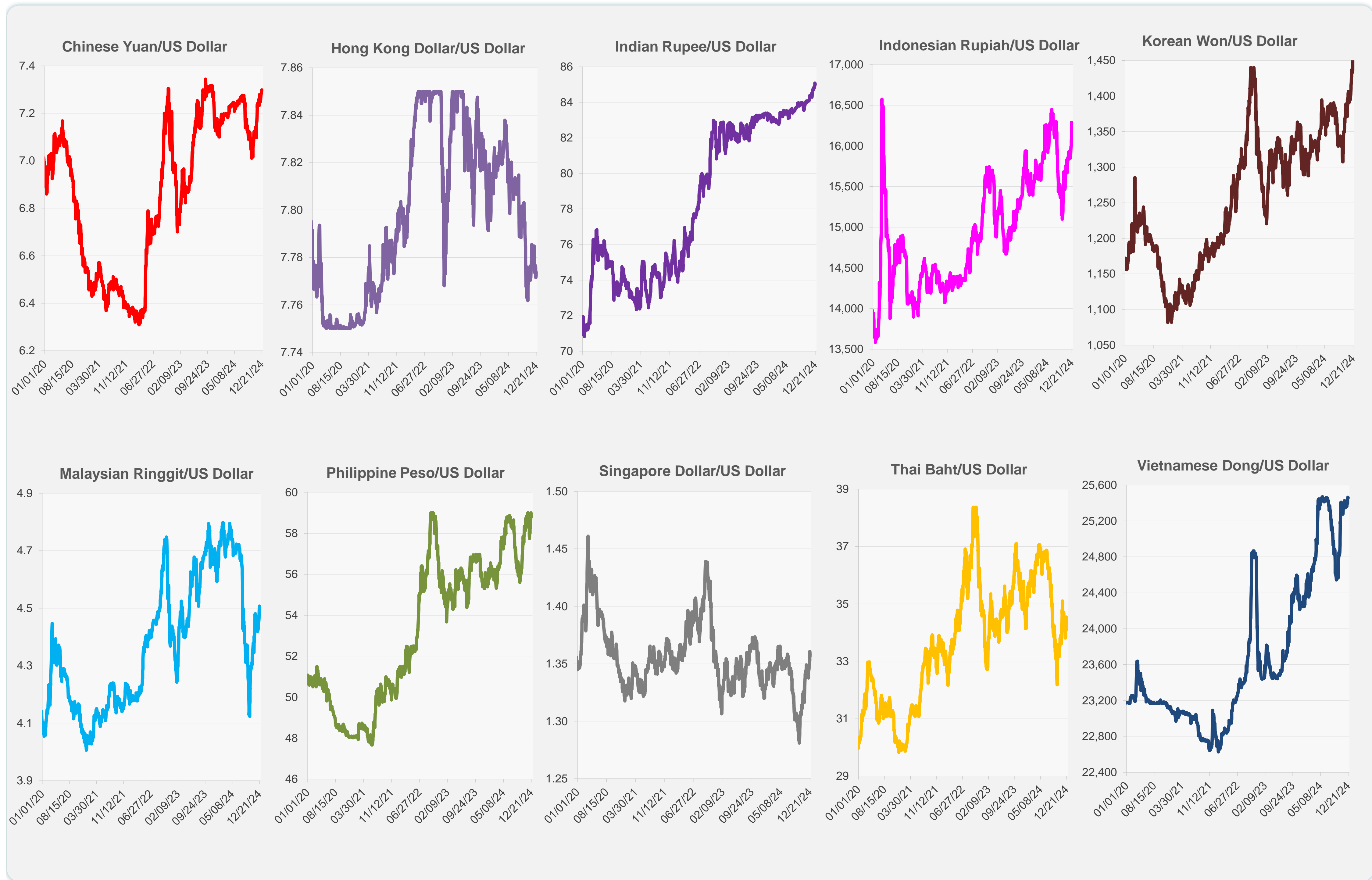
|                              | Latest Closing | % change from Previous Day | % change from 01-Jan-24 |
|------------------------------|----------------|----------------------------|-------------------------|
| Euro                         | 0.96           | 0.19                       | -5.86                   |
| Japanese yen (JPY)           | 156.51         | 0.76                       | -9.98                   |
| Bangladeshi taka (BDT)       | 119.50         | 0.00                       | -8.16                   |
| Brunei dollar (BND)          | 1.36           | 0.29                       | -2.69                   |
| Chinese yuan (CNY)           | 7.30           | 0.01                       | -2.72                   |
| Hong Kong dollar (HKD)       | 7.77           | -0.02                      | 0.48                    |
| Indian rupee (INR)           | 85.02          | 0.07                       | -2.10                   |
| Indonesian rupiah (IDR)      | 16,194.50      | 0.59                       | -4.92                   |
| Korean won (KRW)             | 1,451.45       | 0.03                       | -11.25                  |
| Malaysian ringgit (MYR)      | 4.51           | -0.06                      | 1.91                    |
| Pakistan rupee (PKR)         | 278.35         | -0.02                      | 1.25                    |
| Philippine peso (PHP)        | 58.80          | 0.34                       | -5.80                   |
| Singapore dollar (SGD)       | 1.36           | 0.29                       | -2.69                   |
| Sri Lanka rupee (LKR)        | 293.60         | -0.24                      | 10.00                   |
| Taipei,China NT dollar (TWD) | 32.69          | 0.09                       | -6.06                   |
| Thai baht (THB)              | 34.47          | 0.22                       | -0.96                   |
| Vietnamese dong (VND)        | 25,455.00      | 0.03                       | -4.67                   |



NIE = Newly Industrialized Economies



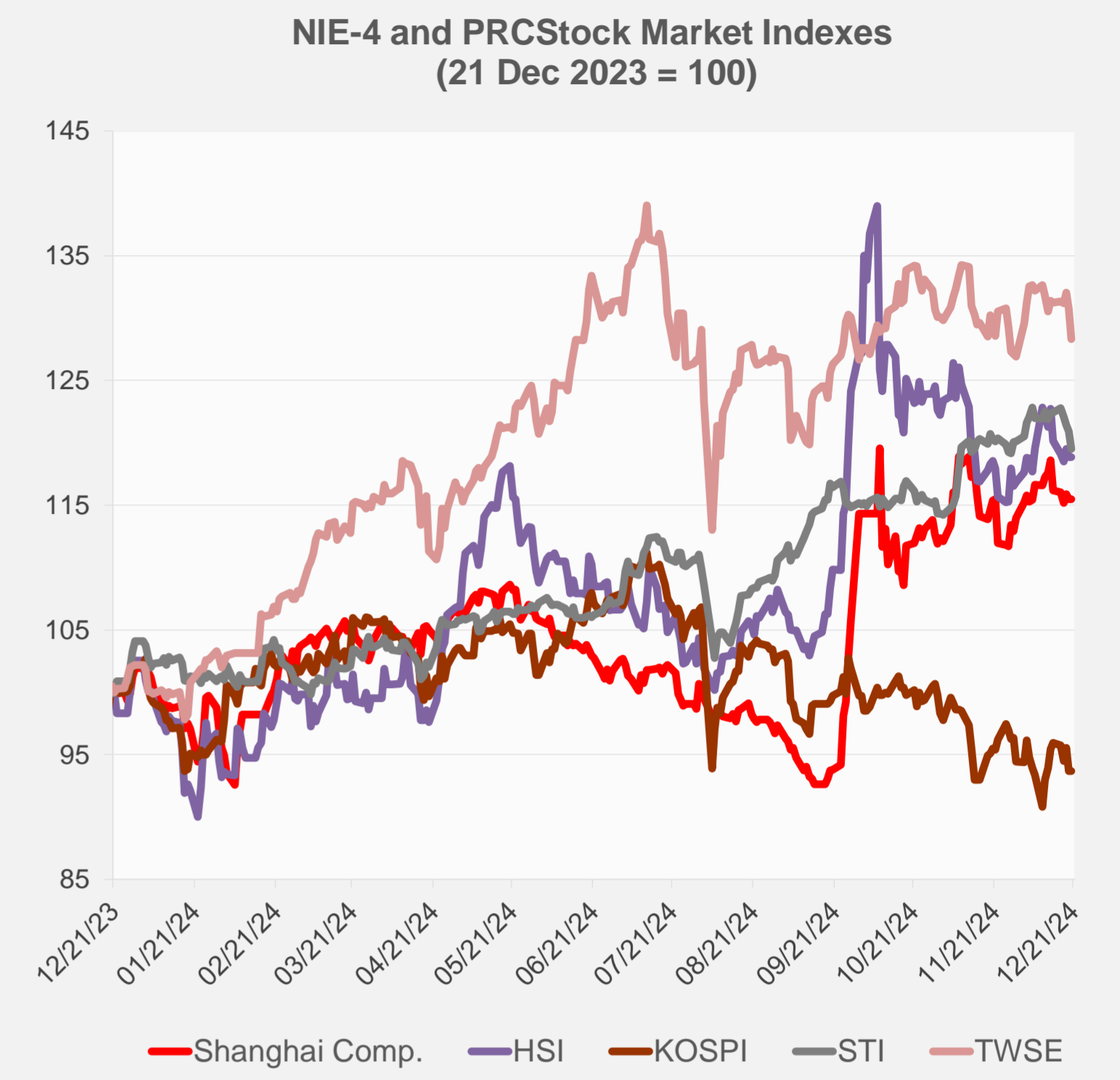
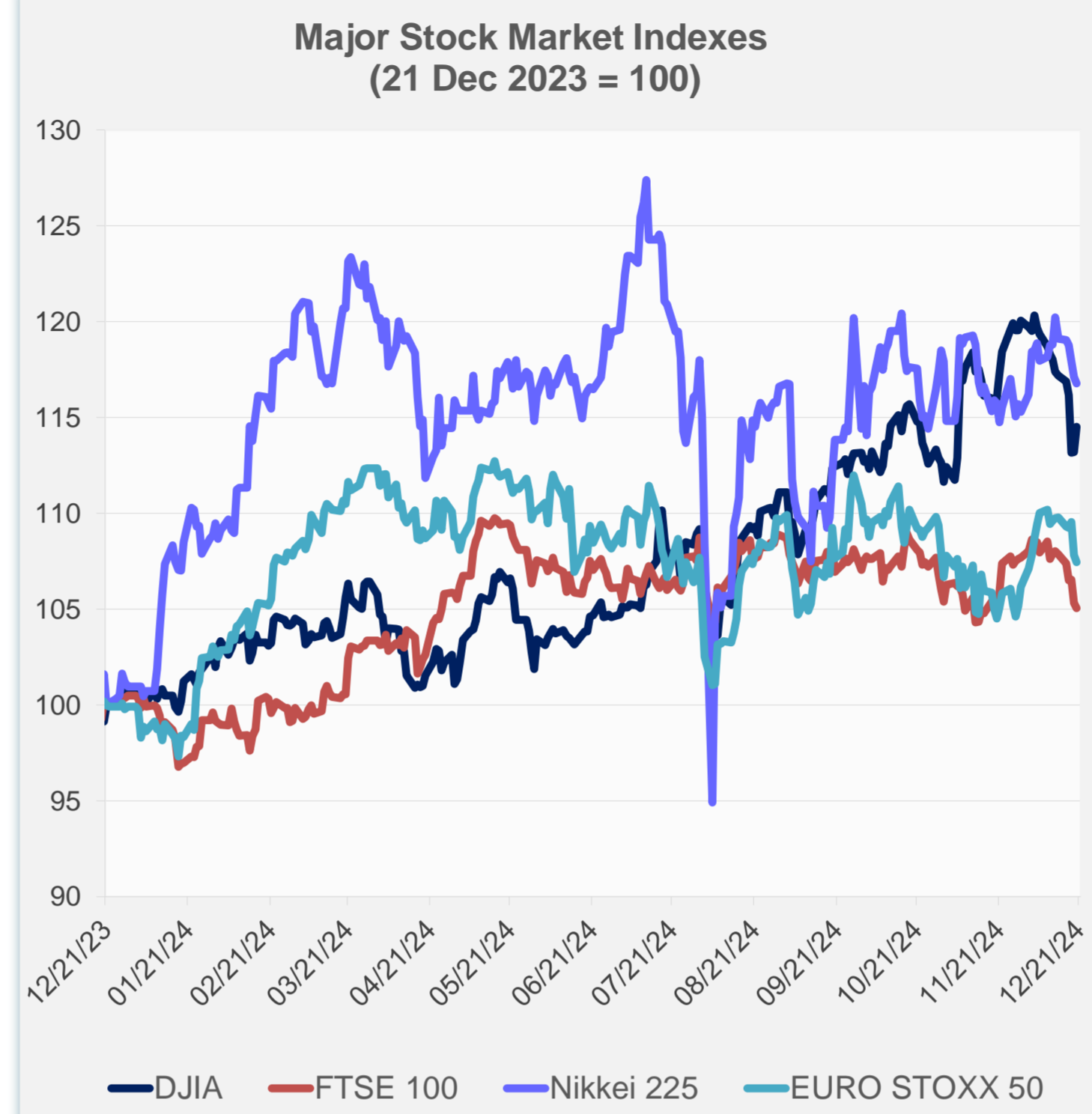
Note: Negative/Decreasing values indicate depreciation of local currency, and positive/increasing values indicate appreciation.  
Source: ADB calculations using data from Haver Analytics.



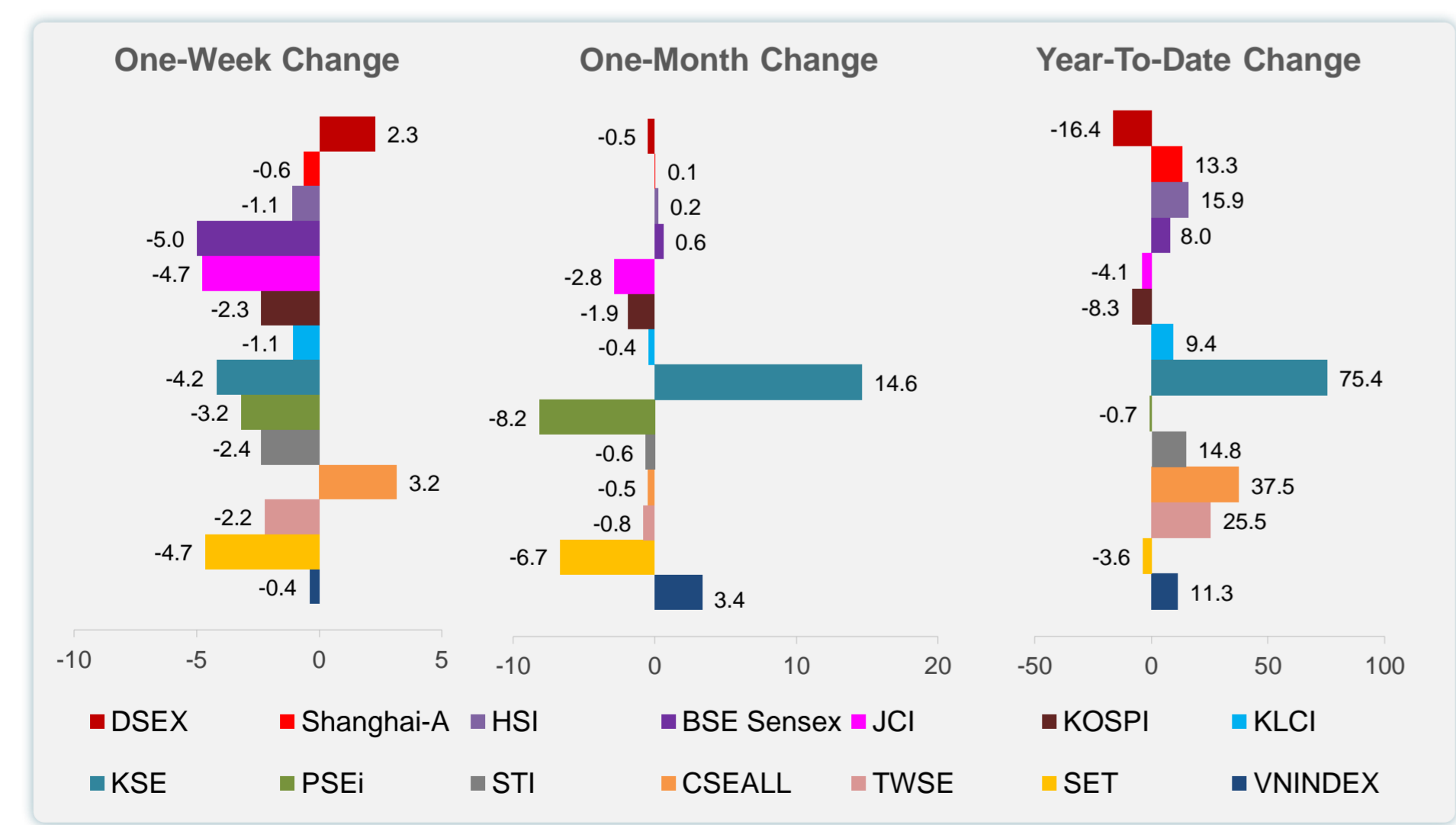
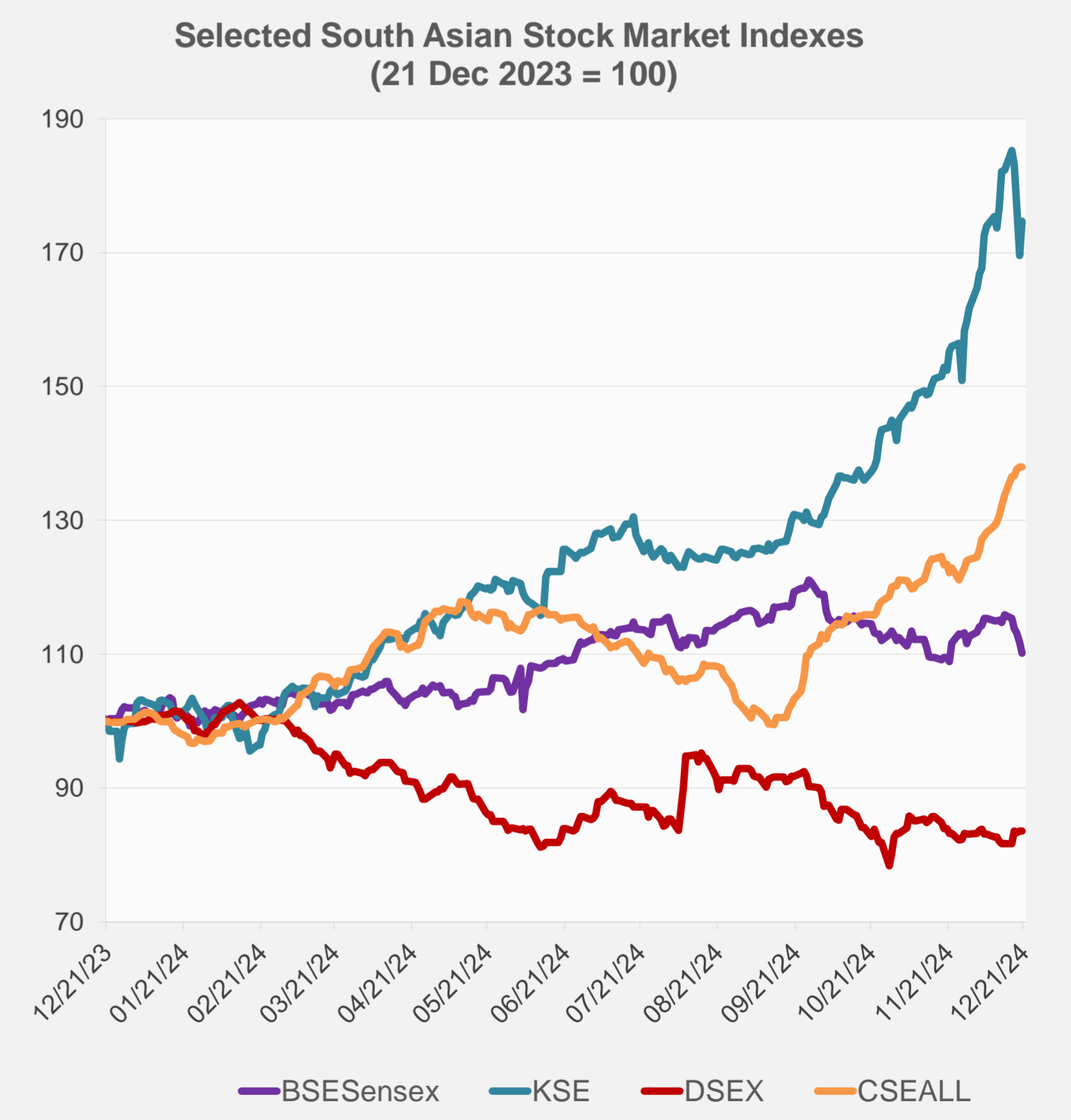
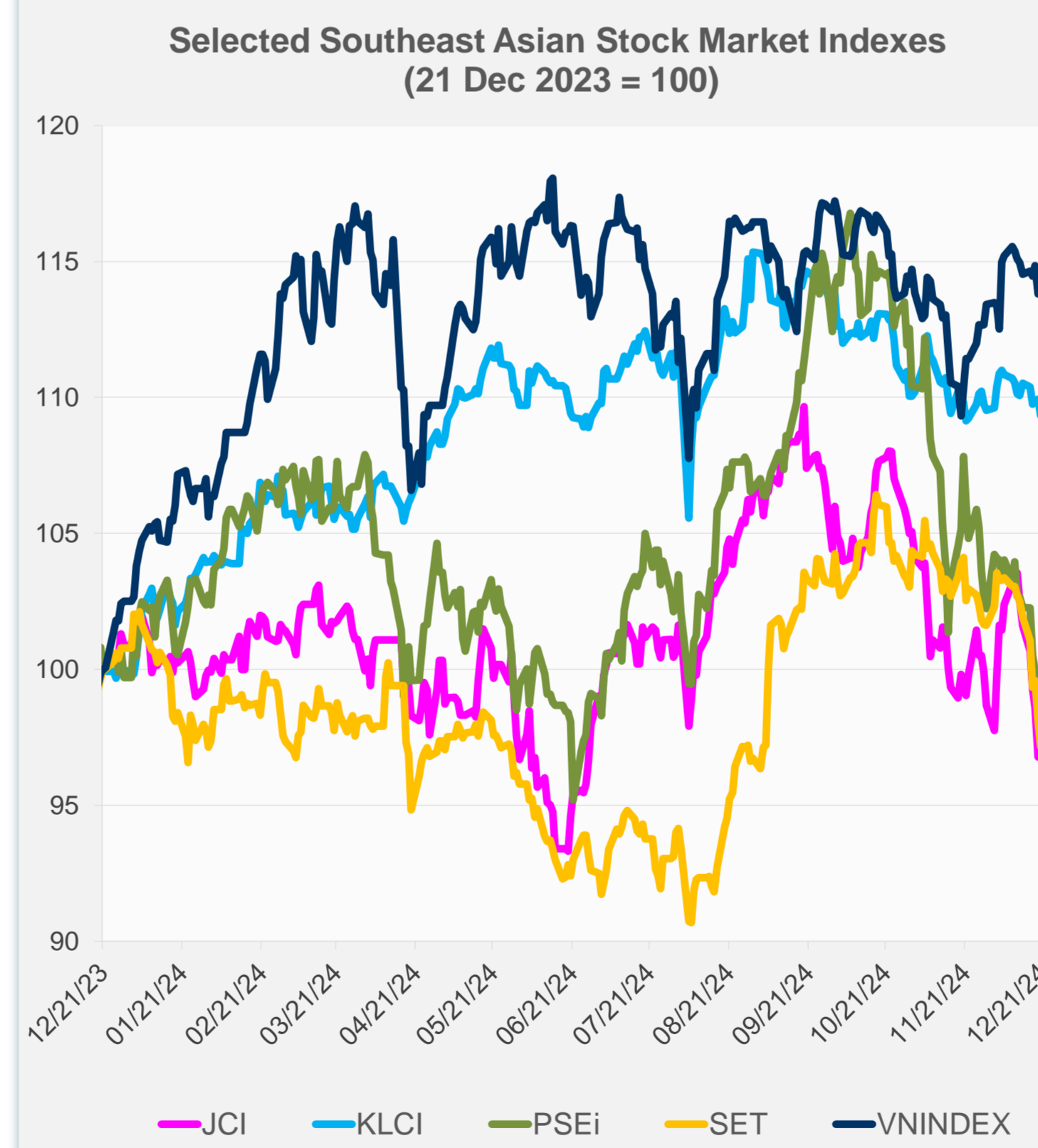
Source: Haver Analytics.

Daily Market Watch  
**STOCK INDEXES**

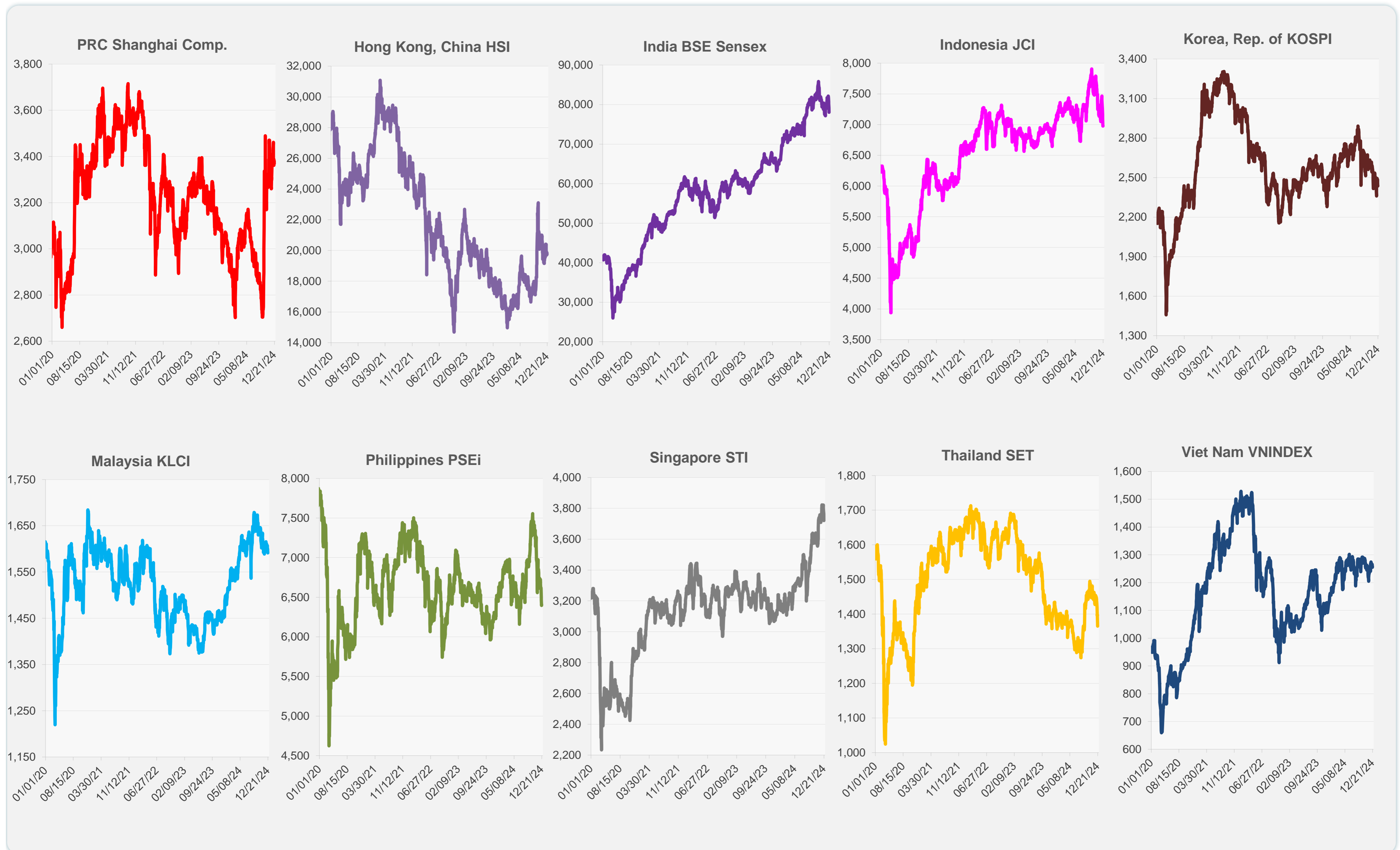
|                      | Latest Closing | % change from Previous Day | % change from 01-Jan-24 |
|----------------------|----------------|----------------------------|-------------------------|
| US Dow Jones Ind Avg | 42,840.26      | 1.18                       | 13.67                   |
| US NASDAQ            | 19,572.60      | 1.03                       | 30.39                   |
| US S&P 500           | 5,930.85       | 1.09                       | 24.34                   |
| UK FTSE 100          | 8,084.61       | -0.26                      | 4.54                    |
| EURO STOXX 50        | 4,862.28       | -0.34                      | 7.54                    |
| Japan NIKKEI 225     | 38,701.90      | -0.29                      | 15.65                   |
| Bangladesh DSEX      | 5,221.57       | 0.00                       | -16.36                  |
| PRC Shanghai Comp.   | 3,370.03       | 0.00                       | 13.28                   |
| Hong Kong, China HSI | 19,752.51      | 0.00                       | 15.87                   |
| India BSE Sensex     | 78,041.59      | -1.49                      | 7.98                    |
| Indonesia JCI        | 6,977.24       | 0.00                       | -4.06                   |
| Korea, Rep. of KOSPI | 2,435.93       | 0.00                       | -8.26                   |
| Malaysia KLCI        | 1,591.41       | -0.54                      | 9.40                    |
| Pakistan KSE 100     | 109,513.14     | 3.05                       | 75.36                   |
| Philippines PSEi     | 6,406.38       | 0.17                       | -0.68                   |
| Singapore STI        | 3,719.93       | -1.14                      | 14.80                   |
| Sri Lanka CSEALL     | 14,654.26      | 0.00                       | 37.54                   |
| Taipei, China TWSE   | 22,510.25      | -1.84                      | 25.54                   |
| Thailand SET         | 1,365.07       | -0.90                      | -3.59                   |
| Viet Nam VNINDEX     | 1,257.50       | 0.23                       | 11.29                   |



NIE = Newly Industrialized Economies



Sources: ADB calculations using data from CEIC Data Company and Haver Analytics.



Sources: CEIC Data Company and Haver Analytics.

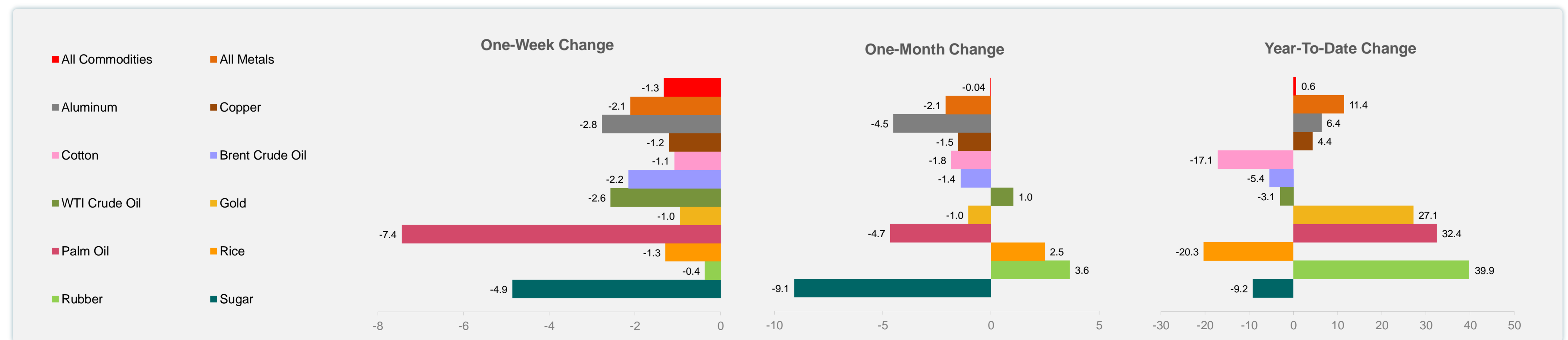
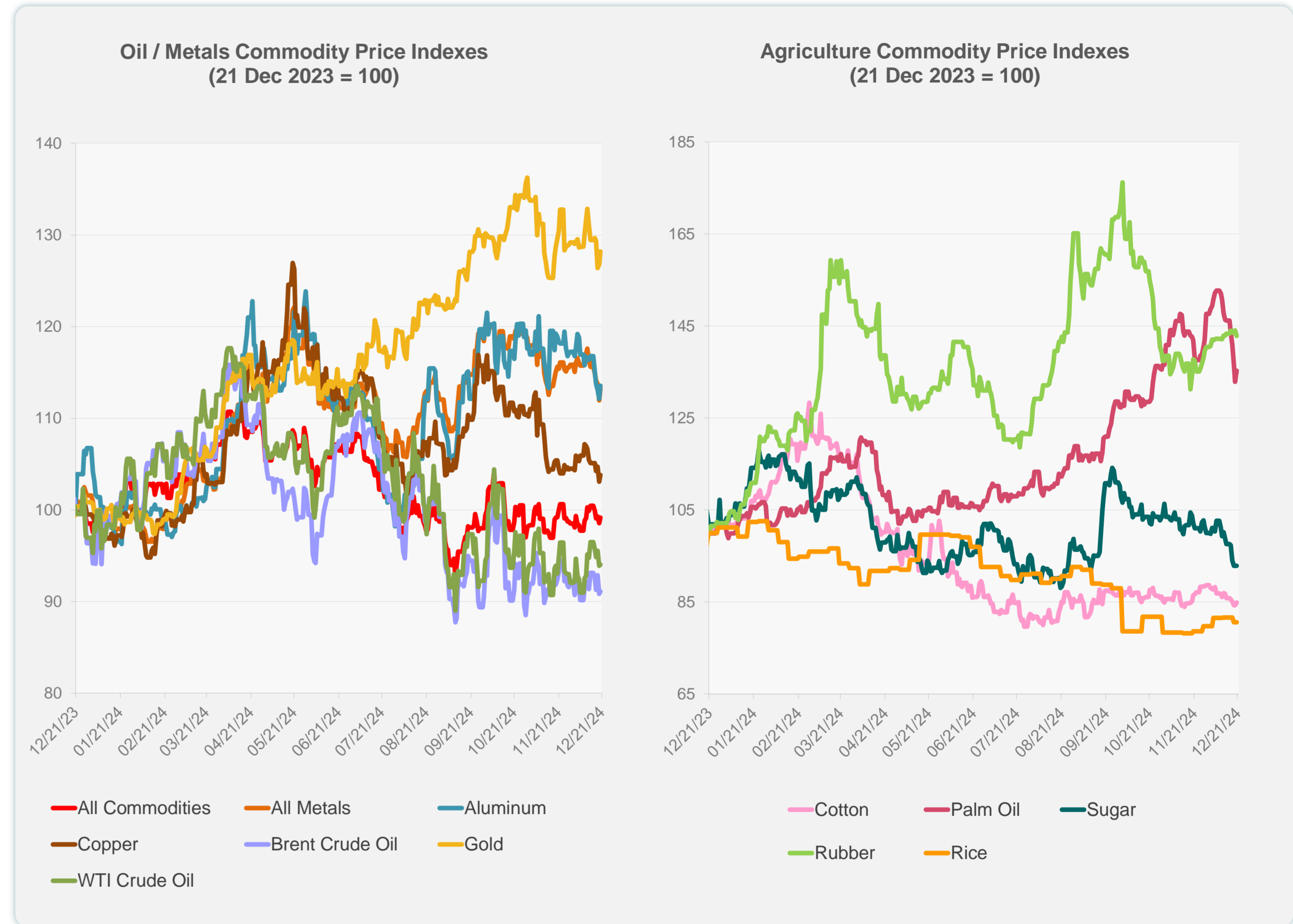
Daily Market Watch  
**COMMODITY PRICES**

23 December 2024, 9:00 AM Manila

|                     | Unit              | Latest Closing | % change from Previous Day | % change from 01-Jan-24 |
|---------------------|-------------------|----------------|----------------------------|-------------------------|
| S&P All Commodities | US\$              | 539.07         | 0.59                       | 0.64                    |
| S&P All Metals      | US\$              | 309.14         | 1.10                       | 11.43                   |
| Aluminum            | US\$/metric ton   | 2,494.67       | 1.24                       | 6.36                    |
| Copper              | US\$/metric ton   | 8,832.85       | 0.71                       | 4.36                    |
| Cotton              | US cents/lb       | 65.06          | 0.74                       | -17.12                  |
| Brent Crude Oil     | US\$/barrel       | 73.40          | 0.29                       | -5.42                   |
| WTI Crude Oil       | US\$/barrel       | 69.46          | 0.12                       | -3.06                   |
| Gold                | US\$/troy oz      | 2,622.91       | 1.11                       | 27.14                   |
| Palm Oil            | US\$/metric tonne | 1,071.46       | 1.79                       | 32.44                   |
| Rice <sup>1</sup>   | US\$/metric ton   | 537.00         | 0.00                       | -20.33                  |
| Rubber <sup>2</sup> | US\$/kg           | 242.10         | -0.82                      | 39.86                   |
| Sugar               | US cents/lb       | 18.59          | 0.00                       | -9.18                   |

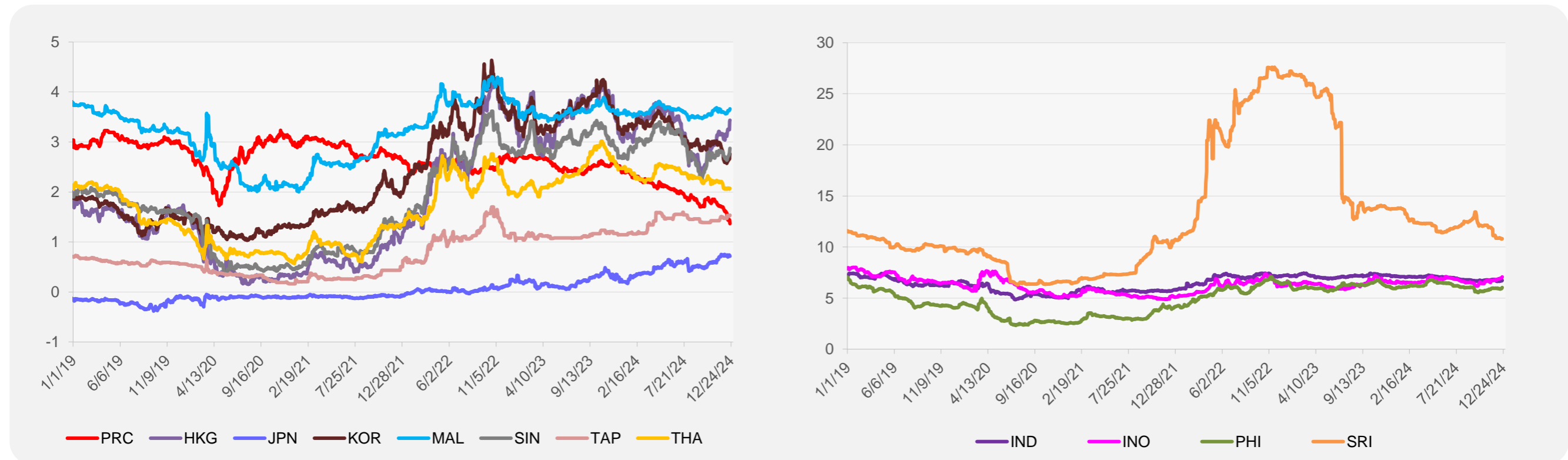
<sup>1</sup> Latest closing price from 18 December 2024.

<sup>2</sup> Singapore Exchange, Ribbed Smoked Sheet Rubber.

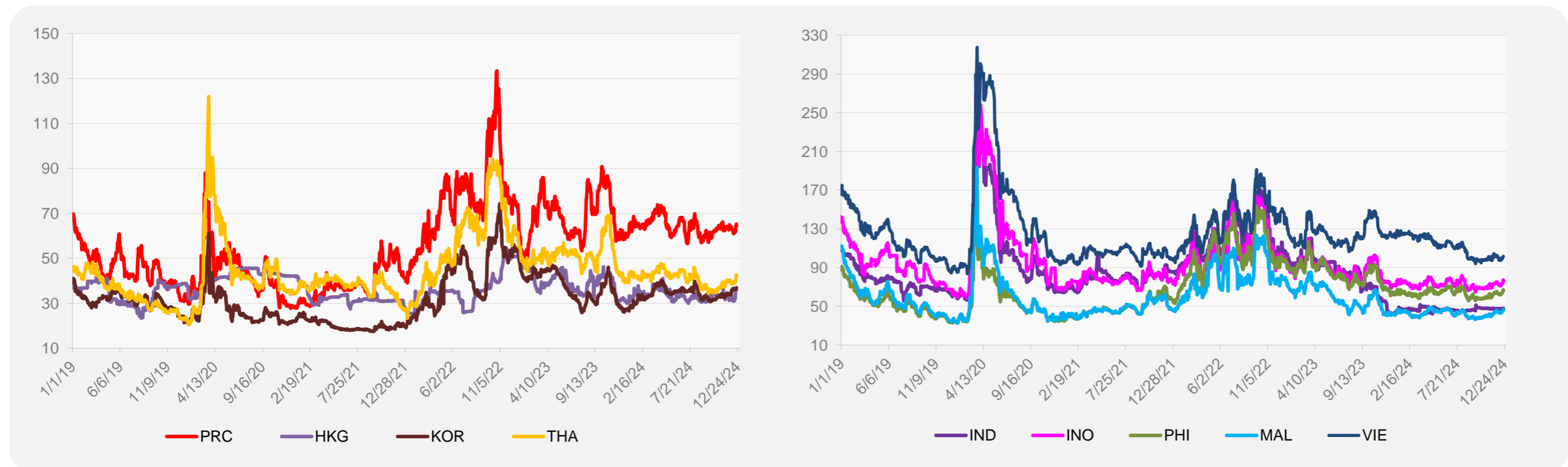


Source: ADB calculations using data from Bloomberg.

### 5-YEAR LOCAL CURRENCY GOVERNMENT BOND YIELDS (%)



### 5-YEAR CREDIT DEFAULT SWAP<sup>1</sup>



<sup>1</sup> In USD and based on sovereign bonds.  
Source: ADB calculations using data from Bloomberg.